

# The Ruthmere Record

THE RUTHMERE FOUNDATION, INC. • 302 E. BEARDSLEY AVENUE • ELKHART, INDIANA 46514

SPRING/SUMMER 2015

## Board of Directors

### Executive Committee

Robert B. Beardsley  
Edward A. Beardsley  
George E. Freese  
Dorinda Miles Smith  
Robert Deputy

### Board

Arthur J. Decio  
Susan C.S. Edwards  
Charles A. Loving  
Joan Beardsley Norris  
James A. Bridenstine  
Teri Stout  
Cameron T. Combs  
Lise Dube'-Scherr  
Connie Fulmer

### Museum Staff

#### Executive Director

William A. Firstenberger

#### Accounting Manager

Bob Frey

#### Development Officer

Gail Martin

#### Curator

Jennifer Johns

#### Associate Curator

Kate Rogers

#### Communications Coordinator

Carolyn Bonanno

#### Collections Manager/ Wedding Coordinator

Joy Olsen

#### Campus Coordinator

Carla Riley

#### Visitor Services Coordinator

Sara Wells



## HAVILAH BEARDSLEY HOUSE OPENS TO THE COMMUNITY

By WILLIAM A. FIRSTENBERGER, EXECUTIVE DIRECTOR

To build something new is a common occurrence in Elkhart. To build something new by restoring something very old is more unusual. To accomplish both of these goals by telling a story that began over two hundred years ago and lasts up to the present day is a challenge worthy of the name Elkhart. The purpose of the Havilah Beardsley House is to celebrate the values and business enterprise of the City of Elkhart set in place by the Beardsley family, to acknowledge successive Elkhart entrepreneurs and inspire new generations through education and cooperative programming with organizations sharing similar goals.

One family with an enduring vision and set of values has made a lasting impression on our community for nearly two centuries. In 1829 when traveling through northern Indiana, Dr. Havilah Beardsley encountered a special place, a place at the heart of vital resources—the confluence of the Elkhart and St. Joseph rivers. Havilah Beardsley immediately recognized the natural advantages of this site, but he also showed the Potawatomi Chief Pierre Moran the respect he deserved as his community's leader. Elkhart would be a place built upon fairness and compassion.

The Havilah Beardsley House represents much more than the story of one family. Many families and businesses have picked up the Beardsley torch and re-made Elkhart their own. Both native-born and those who have moved into this community, have added their chapters to this story of business entrepreneurship and innovation. To know what the future of America holds, one need only look into the eyes of Elkhart's children and students.

The Havilah Beardsley House is a very different kind of house museum. It is a place to experience history firsthand, fire the imagination and rethink one's perspective on being an active citizen in a community. This museum is yours to explore, get your hands dirty with history and discover what it means to be an Elkhart entrepreneur!

Historic preservation is not a right or even a privilege. Preservation is a value; it must be chosen. When a community chooses to preserve its past, it is not only showing pride, but it is also affirming its identity. Elkhart is a community of innovators, always looking to improve the present and build something new for the future. And yet, here at the heart of our community that is known for creating things that are new and cutting edge is a perfectly preserved component of its past, the place where it all started, the Havilah Beardsley House.

Ruthmere Record Editor - Carolyn Bonanno



An Experience in History, Art & Architecture

Renew or donate today!

Please complete this form and mail or fax to: Ruthmere Museums Campus Membership 302 E. Beardsley Avenue, Elkhart, IN 46514 Phone: (574)264-0330 Fax: (574)266-0474

- Individual - \$50 Family - \$75 Patron - \$100 Bronze Patron - \$250 Silver Patron - \$500 Gold Patron - \$1,000 Rose Gold Patron - \$2,500 Platinum Patron - \$5,000 Diamond Patron - \$10,000 Corporate Patron (For-Profit) - \$500 Corporate Patron (Non-Profit) - \$250

Name(s) as you would like to be listed in publications

Address

City/State/ZIP

Home Phone

Business Phone

E-mail address

Total enclosed \$ (payable to Ruthmere Museum)

Please charge \$ to my credit card VISA MC Discover

Account number Expiration Date

Signature (required for credit card) This is a gift membership for:

Name(s)

Address

City/State/ZIP

Home Phone

- Memorial: In Memory of: Memorials may be made anytime at Ruthmere. Matching gift form enclosed. Membership contributions to Ruthmere Museums Campus may be matched by your employer. Ask if your company participates in the matching gift program. Additional donation enclosed \$ Ruthmere Museums Campus Havilah Beardsley House Project Other

Ruthmere's mission is to inspire the imagination and promote excellence in fine arts, architecture, and historic preservation, and to advocate life-long learning and the entrepreneurial spirit.

VIVE LA FRANCE (AND RUTHMERE)!

By KATE ROGERS, ASSOCIATE CURATOR

This July, Ruthmere's programs and events will be "en français!" To celebrate the French influence that can be found at Ruthmere, from its architecture to its art, we will be hosting a few special events and programs. Our Gallery Talk will focus on a work of art by a well-known French artist, never before seen at Ruthmere. And in keeping with our theme, our Discover Historic Elkhart Lecture this month will focus on French Trappers/Traders and the waters of Elkhart County, led by Matt Schuld, Director of the Elkhart County Historical Museum.

We will also be hosting a Members Only Party on Bastille Day, featuring delicious French cuisine and live entertainment. For kids of all ages, we have our Garden Fête and Sorbet Social! Guests are invited to enjoy music with a French flare and delicious sorbets in Ruthmere's beautiful garden setting. The pièce de résistance is this year's membership giveaway: a trip to Paris, France! Enjoy a four night stay in a 4-star hotel in the City of Lights planned by our partners at Menno Travel and you! You must be a member to be entered to win, but with a range of membership options and benefits it is easy to sign up. Join us at one of our events or on a tour to learn more. Allons-y (Let's go)!



BUY A MEMBERSHIP AND WIN A TRIP TO FRANCE

By JENNIFER JOHNS, CURATOR

"Membership has its perks" is a slogan we hear a lot, but a Ruthmere membership goes far beyond that. Menno Travel is partnering with us to make one lucky Ruthmere member and a guest win a 4-nights dream trip to Paris, France. The Ruthmere member's name will be drawn at the December 31st EOQ Cocktail event at 6pm, so get ready to celebrate!

How can you be entered into the drawing? All new members at the Individual and Family Membership levels as well as current members who renew at their existing membership level will receive one chance to win. Renew your membership today to have your name entered into the drawing for our Paris trip giveaway. Increase your chances by bumping up your membership renewal at a patron level or higher and get 3 entries! For a full list of membership benefits visit www.Ruthmere.org Don't miss your chance, become a member today and possibly win that trip of a lifetime!

HUBBLE HOUSE

By ROBERT B. BEARDSLEY, PRESIDENT

"Hubble House," named after my grandfather Andrew Hubble Beardsley (1864-1936), is the name my parents gave to their new Georgian Revival style house built at 2233 Greenleaf Boulevard in Elkhart, finished in May, 1937. My mother, Marjory, or Midge, whose mother was English-born, had visited England many times in her youth and grew fond of this period of English country architecture and had always hoped to build her own home in this style. Fred Starbuck was its architect and originally designed something much grander, but The Depression then at its height, made anything too ambitious inappropriate for the times. Therefore, everything was scaled back except the stair hall which my mother designed herself and insisted stay, to me it was always the glory of the house. Ira Mast was the builder. Several decades after its completion, my mother called him late one evening to complain about a leak in "his" roof, and would he please come to fix it. "But Mrs. Beardsley, I'm 93 years old! I'll send my son instead."



Hubble House was originally set in three acres overlooking the beautiful St. Joseph River. Its gentle terraces that lead to the water were landscaped by horse-drawn equipment and were designed by my mother, again in the English style. We have film footage at Ruthmere's archives documenting this feat. Later, in 1938 my parents added a swimming pool, no longer there, that had underwater lights but no heater which made swimming a challenge until the end of August. No ordinary pool, ours was fed by an Artesian well with water that arrived at 53 degrees. There I learned to swim when it was 65 degrees and have hated cold water ever since as did most of the neighborhood kids and my mother, who I believe never went in once.

Originally the property also included three acres across the street where my father built a tennis court, the place where I learned to play this game that has now become popular around the world. As a teenager at \$3 an hour I had to paint its 10' high metal fence one summer, a task that took four weeks under a very hot August sun. Back in those days it was an open field where in the summer wild strawberries grew that my mother lovingly collected in a red straw basket. Oddly enough, I still have that red wicker basket in my kitchen here in Fort Lauderdale today, where I store potatoes and onions. These days that field is populated with upscale houses, a community all in itself.

I arrived at Hubble House newly adopted at age 5 in 1938 on Good Friday from an orphanage in Cedar Rapids, Iowa, where meat was not an everyday staple and my bed was an iron cot. Hubble House, a real mansion! My spacious bedroom AND private bath was in the back facing the sunny south. My mother found me my first morning "home" sound asleep under a corner of the carpet, amazed I was not in my luxurious bed with my own sheets and blankets. But I got used to luxury fast. Cook Goldie Mae Mill's room was next to mine, and we soon communicated "good morning" to each other with raps on the wall as she descended the back stairs to the kitchen to prepare the household breakfast. Mary Sinn also lived there as second maid. Her day uniform was white, but for serving evening dinner in the dining room it was always "plum." Even as a child I thought "Sin" was an odd name for a nice Amish girl from nearby Shipshewana. Mary was a most modest and virtuous woman, and my friend.

I will never forget my 7th birthday party in this house, September 8, 1940. Some 20 kids showed up for cake and ice cream bearing presents while a hired magician dressed in black performed his magic tricks and kept us enthralled with his wizardry. A "magic string" beginning at the front door showed the kids the way to the river where party tables were set up under the big sycamore tree that was decorated with dozens of colored balloons.

The large living room with its marble fireplace and high book cases was a golden oasis at sunset, but a room not often used, although there was my mother's Mason and Hamlin grand piano on which I first plunked out my life-long love for the piano. In those days the downstairs was carpeted wall to wall in deep rose. The hardwood parquet floors were installed later. The family always sat in the "study" with the ship's bay windows overlooking the grass terrace later replaced in 1947 with slate. This was the coziest room in the house, its pine paneling book cases filled with the classics and "modern" novels from the Twenties and Thirties. There I spent many happy hours in my father's big red leather chair in front of a fire learning to read and appreciate the world of literature. I have been a reader ever since.

(continued on page 4)



## HUBBLE HOUSE (CONTINUED)

By ROBERT B. BEARDSLEY, PRESIDENT

The glorious St. Joe River is where I first learned to sail on my father's 10' Herreshoff dinghy named "Periwinkle." It was a dinky little dinghy, but until the 1950s and the arrival of water skiing that created waves that swamped my little craft, it was my private lake where I thrilled to many hours of tacking and coming - about and racing other little sail boats that dared to take me on. We also had an Old Town steel row boat with two sets of oars that often got taken out for sunset cruises. As a teenager I inherited from a cousin down the street a 1.5 horsepower Elco outboard motor (such power!) that I fitted-out with a steering wheel that propelled me around the river everywhere at breakneck speeds up to 6 mph. Other kids had the same idea so come late summer and the tomato season we had grand naval engagements, our ammunition the oldest rottenest tomatoes we could purloin from our parents vegetable gardens. Having a steel hulled craft, when the tomatoes ran out I could always ram. What fun we had!

As my father wrote to a friend, I was rather a "handful" as a child so before long I was packed off to boarding school in Berlin, Connecticut, near my maternal grandparents who lived in Darien. Then the war came and I became an Army brat of sorts following Dad to Washington and San Antonio before settling into Howe Military School, Howe, Indiana, for "the duration" for three years. Daddy came marching home from India in May, 1945, and our little family was reunited. Christmas and holidays at home without him were rather glum as I remember, but mother always had a little Christmas tree in the hall for me and we listened to Bing Crosby on the radio singing "White Christmas."

I really never spent much time "at home" but have fond memories of business cocktail parties and the small amount of socializing they did there. As I grew older and went on to grammar and high school and eventually Princeton, my mother took to spending winters October through May in Miami while Dad stayed home and tended to a fast-growing business where he was president and then chairman of Miles Laboratories, Inc. My holidays were often spent with her joined by my father when he could get away.

My happiest memories of 2233 Greenleaf Boulevard were after I returned home after starting work in the publishing business in Boston. In 1965 I returned to Elkhart as my father's personal assistant, although I lived then at my farm in Bristol. Our friend and cook Edith Palmer prepared delicious dinners for us every night he was in town preceded by jolly cocktails in the study. There we spent many happy hours talking business and family before and after dinner. In that room the idea for restoring Ruthmere was first discussed, and it didn't take much to sell him on the idea.

Hubble House today is much altered by additions from its recent owners who changed and added to it to meet their modern needs. I inherited the property when my mother died in 1992 until I sold it in 1995 and did some modest remodeling of my own, but I never could find an old Magic Chef stove for the kitchen like the one that had been there. I used to hide behind it to scare Goldie in the mornings when she came down the back stairs to make breakfast, but as all boys did then I wore those cursed corduroy knickers that made a swishing noise when you walked, and she always heard me coming. It seems there is very little in life one can get away with that somebody doesn't already know about. But fond memories linger, and I wish happiness and joy to all future residents of Hubble House.

## 2015 COFFEE ON THE PIAZZA

By KATE ROGERS, ASSOCIATE CURATOR

Coffee on the Piazza will be back this summer and better than ever! Not only will you get to enjoy delicious free coffee and great local talent, but you will get to enjoy twice as much. Almost every Saturday this summer Ruthmere will feature two local artists or bands for these outdoor concerts. Two awesome artists, one great start to your Saturday morning! Our line-up consists of old favorites and new faces. Once again, Ruthmere will be partnering with local coffee shop and eatery, The Daily Grind, who will be providing the coffee.

So go local Saturdays this summer and come soak in the sunshine and ambience of Ruthmere at Coffee on the Piazza. This program will run every Saturday from June to August, except for the Fourth of July as Ruthmere will be closed in honor of the national holiday. Coffee is available beginning at 9:30 am and the live music begins at 10 am. Coffee on the Piazza concludes with the Ruthapalooza finale on August 29th. Coffee on the Piazza is made possible by the generous sponsorship of **KeyBank**.



## PLUGGED IN! RUTHMERE ELECTRIC AUTO SHOW

By WILLIAM A. FIRSTENBERGER, EXECUTIVE DIRECTOR

Car shows are common—all electric/hybrid auto shows are non-existent. Pulling together all electric/hybrid car models at one site for a one day high voltage event makes for easy comparison shopping in a fun and educational environment. Join us on May 9th from 10am - 4pm for the inaugural Plugged IN! event. A wealth of pure electric and hybrid/electric models on today's market will be on display. Take a test drive of a new 2015 beauty or settle in for a ride in Ruthmere's vintage 1916 Milburn Electric famously owned and driven by noted Elkhart resident Nellie Knickerbocker.

Gate admission is \$3 per adult or \$7 per family. Ruthmere members receive FREE admission; membership purchase available at the gate. In addition to the main attraction of electric/hybrid cars, enjoy a high energy snack at the Current Café, groove to live music in the Livewire Garage and learn about electricity with a clutch of hands-on activities from ETHOS Science Center in the Electricity Garden. Get amped up at Ruthmere and get Plugged IN!



## EOQ (END OF QUARTER) COCKTAILS FOR 2015

EOQ (End of Quarter) Cocktails continues with quarterly parties in 2015. March 26th will feature Caribbean Rum, June 25th will offer French Cognac and September 24th we will re-visit single malt Scotch Whisky. Our last event on December 31st will feature champagne and prosecco as we celebrate the New Year and the drawing of our winner for the Membership Giveaway - a trip for two to Paris, France! Our series is sponsored by Pumpnickel's Catering who provides the delicious hors d'oeuvres.

Ruthmere Corporate members and Bronze Patron members and higher receive two complimentary admissions to each EOQ event. All other Ruthmere members and guests are admitted for \$15 per person. EOQ Cocktails are private Ruthmere member parties and are not open to the public. EOQ Cocktails are held from 5-7pm at Creek House Center unless noted otherwise. R.S.V.P. by noon on day of the event to 574-264-0330 ext. 116.



*March 26th - Caribbean Rum  
June 25th - French Cognac  
September 24th - Single Malt Scotch Whisky  
December 31st - Champagne Celebration*



## FALL CONCERT SERIES GETS NEW PARTNER AND OLD FRIEND

By WILLIAM A. FIRSTENBERGER, EXECUTIVE DIRECTOR

Ruthmere is excited to partner with Lampkin Magic Productions to bring a new level of quality entertainment to the Elkhart community for Ruthmere's annual Fall Concert Series. Lampkin Magic's style is simple yet elegant, filled with variety and virtuosity. This series concentrates on jazz and light musical theater/pop. The opening concert, introducing Elkhart native Alyssa Atkinson, will feature classic songs from the 1930s and 40s mixed with musical theater/pop, suited to a piano and vocal setting. Chicago based Jazz chanteuse, Spider Saloff, will celebrate the music of the legendary Indiana songwriter, Cole Porter. South Bend native, saxophonist Danny Lerman, will dazzle the audiences with selections from the Gershwin songbook.

Lampkin Magic Productions, Ralph Lampkin, Jr., and Phil Patnaude, have over 80 combined years of experience in the fields of music, theater, film and television as producers, writers, directors, designers and event planners. Their productions across the country have featured some of the best talent in show business including Tony Award winners Donna McKechnie, Alice Ripley and Hinton Battle. Lampkin Magic performances have been held at Carnegie Hall, Metropolitan Room, Apollo Theater, Mercury Theater, Bailiwick Theater, Stage 773, Stephenwolf Theater, Royal George Theater, Avery Schreiber Theater and the Gardenia. For a complete listing of upcoming performances visit [www.lampkinmagicproductions.com](http://www.lampkinmagicproductions.com).

Also returning to Ruthmere for the finale of the Fall Concert Series will be world renowned pianist and Elkhart native Nicholas Roth. The Fall Concert Series concludes on the Friday following Thanksgiving, a Ruthmere and Nicholas Roth tradition. Book your season pass for this year's exciting slate of artists for the Ruthmere Fall Concert Series.



ALYSSA ATKINSON



DANNY LERMAN



NICHOLAS ROTH



SPIDER SALOFF

## VOLUNTEER SERVICES

By SARA WELLS, VISITOR SERVICES COORDINATOR

I am very excited to be taking on volunteer coordination this year. I have worked with many of Ruthmere's volunteers this past year, and they are such a great group of hard-working individuals with a broad variety of talents. I am truly looking forward to spending more time with everyone this coming year and getting to know everyone even better.

In the past months I have learned just how important volunteers are in the running of Ruthmere and the Havilah Beardsley House; without our volunteers it would be impossible to deliver the number of grade-A tours that our team of diligent and caring volunteers provides to the public. It is equally amazing how willing everyone has been to come to the rescue when those rare last-minute schedule changes occur and we need extra assistance. There is no way to adequately express how much the staff at Ruthmere appreciates our volunteers, but we will never stop trying.

## GREENHOUSE BUTTERFLY EXHIBIT

By KATE ROGERS, ASSOCIATE CURRATOR

This summer Ruthmere will have some unique guests staying in its greenhouse. For the entire month of July, the museum will be hosting a butterfly exhibition! These colorful and graceful creatures will be flitting about the greenhouse for all to enjoy. The exhibition will feature a few species native to Indiana, as well as their host plants.

During our regular tour hours, visitors can come to interact with and learn more about these beautiful winged insects. Admission to this special exhibition can be added to our regular house tour or toured on its own. Any children who visit will receive a free butterfly coloring book page! This exhibition will launch the re-opening of the greenhouse to the public and guests will once again be able to experience another important part of Ruthmere's architecture and history.

Because of this special exhibition we will be hosting a few special programs in July on butterfly gardening and conservation. During these events, guests will learn how to build their own butterfly garden, as well as a little on the conservation of these remarkable little creatures. As the exhibition draws closer, more information will be made available through our press releases, on Facebook and through our e-newsletter, which provides a month-by-month update on all the programs and special events Ruthmere has to offer.



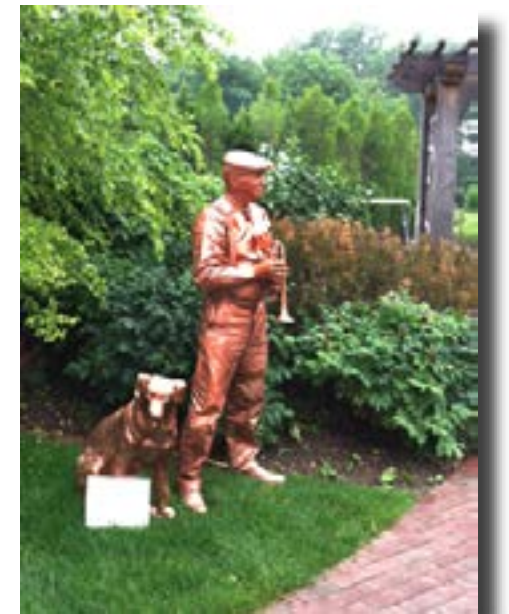
*Butterflies are self-propelled flowers!*

## LIVESTATUE RETURNS TO RUTHMERE

Ruthmere is once again bringing the international award-winning performance artist Robert Shangle of LiveStatue to community events this summer. Robert will mesmerize the crowds with his engaging and sophisticated living statue performances at the Grand Opening of Havilah Beardsley House May 3rd, Elkhart Jazz Festival June 19th and 20th and at the Elkhart County Fair on July 26th. Partial underwriting for LiveStatue by Downton Elkhart, Inc.



LIVESTATUE  
HAVILAH BEARDSLEY HOUSE  
SUMMER 2014



LIVESTATUE AT WELLFIELD  
SUMMER 2014



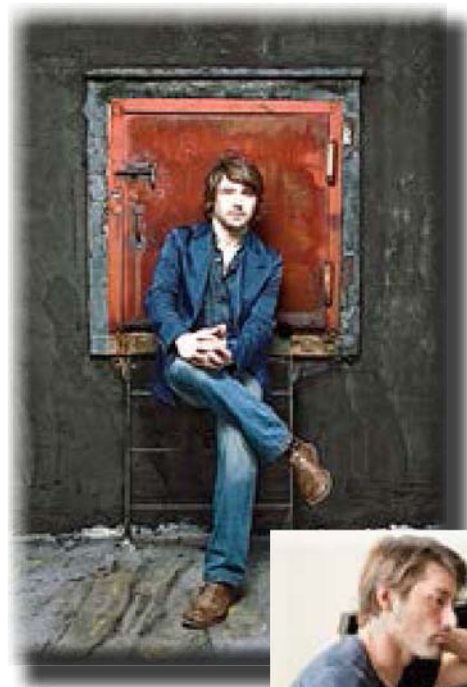
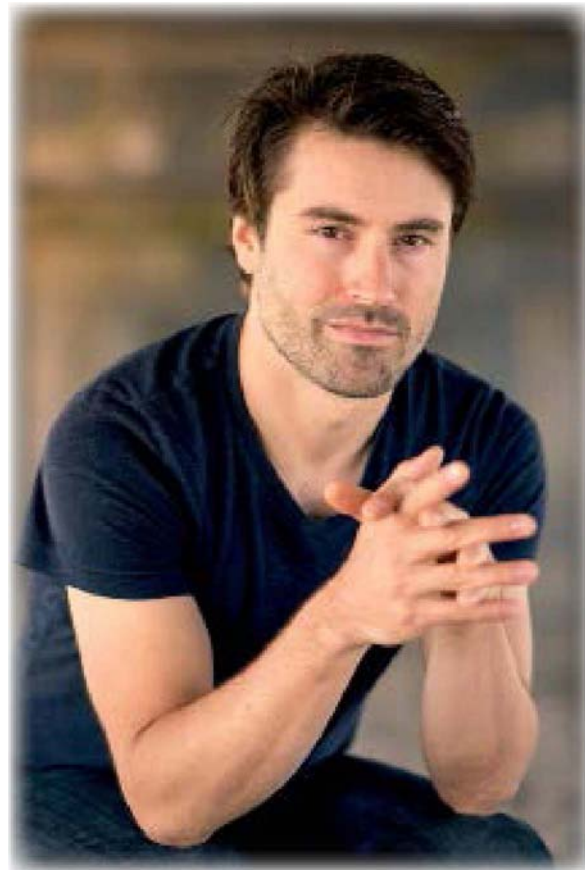
**RUTHMERE AND LAMPKIN MAGIC PRODUCTIONS PRESENTS  
AMERICAN-FRENCH PIANIST AND COMPOSER DAN TEPFER**

The gifted pianist/composer Dan Tepfer will grace the Elkhart area with an intimate concert at Ruthmere Museum on July 11th at 7pm. As an appropriate finish to Ruthmere's Bastille Day celebration in the afternoon, Dan will perform an evening of selections by Ravel and his own compositions.

Born in Paris to American parents, **"tremendously gifted"** (LA Times) pianist-composer Dan Tepfer has translated his bi-cultural identity into an exploration of music that ignores stylistic bounds. His 2011 Goldberg Variations / Variations, which pairs his performance of Bach's work with improvised variations of his own, has received broad praise as a **"riveting, inspired, fresh musical exploration"** (New York Times). He has worked with the leading lights in jazz, including saxophone luminary Lee Konitz, while releasing seven albums as a leader. As a composer, he is a recipient of the **Charles Ives Fellowship from the American Academy of Arts and Letters** for works including **Concerto for Piano and Winds**, premiered in the **Prague Castle** with himself on piano, and **Solo Blues for Violin and Piano**, premiered at **Carnegie Hall**. Bringing together his undergraduate studies in astrophysics with his passion for music, he is currently working on integrating computer-driven algorithms into his improvisational approach. Awards include first prize and audience prize at the **Montreux Jazz Festival Solo Piano Competition**, first prize at the **East Coast Jazz Festival Competition**, and the **Cole Porter Fellowship from the American Pianists Association**. His recent soundtrack for the independent feature **"Movement and Location"** was voted Best Original Score at the 2014 Brooklyn Film Festival.

Tickets for the Dan Tepfer concert and reception following are \$50 per person, Ruthmere members receive 15% discount. Limited general seating. Call 574-264-0330 ext. 116 to make reservations.

*American-French Pianist and Composer  
Dan Tepfer*



**CONTEMPORARY ART EXHIBITION**

*By KATE ROGERS, ASSOCIATE CURATOR*

This fall Ruthmere will be hosting a Contemporary Art exhibition, selecting pieces to install and exhibit in various rooms within the historic home that "Respond to Ruthmere." Participating artists will choose one room or object within Ruthmere and/or its collection to respond to with a contemporary work of art. Interested artists should attend our Open House on Thursday, April 9, 2015 at 6 pm to learn more. If you have questions, please call Associate Curator Kate Rogers at 574-264-0330, ext. 116 or email her at [krogers@ruthmere.org](mailto:krogers@ruthmere.org).



**"RESPOND TO RUTHMERE"**

**2015 QUILT GARDEN DESIGN - POMEGRANATE WINDOW**

*By CARLA RILEY, CAMPUS COORDINATOR*

Pomegranates have played a role in human history for over 4,000 years. They symbolize hope, wealth and prosperity worldwide. E. Hill Turnock, the architect who designed Ruthmere, used the pomegranate design extensively as a decoration both inside and outside at Ruthmere.

The 2015 Quilt Garden along the Heritage Trail will showcase this lovely design in rich red and yellow flowers. Every year Ruthmere enlists volunteers, staff and the horticulture students at the Elkhart Area Career Center to plant the quilt garden. Special attention is given to the garden throughout the summer through weekly watering, fertilizing and weeding. The public is invited to come and enjoy Ruthmere's 2015 Quilt Garden along the Heritage Trail and also learn about the history of Ruthmere Museum.





## HAVILAH BEARDSLEY HOUSE DONORS

Arthur J. Decio  
Elkhart County Community Foundation  
Joan Beardsley Norris  
Robert Beardsley  
Craig & Connie Flumer  
Robert & Mary Pat Deputy  
Rex & Alice A. Martin  
Peggy Weed  
George & Kathy Freese  
Welter Foundation  
Jack & Karen Cittadine  
Richard & Linda Armstrong  
Jim & Patty Brotherson  
Firefly Trust  
Rim Institute  
Raymond & Teri Stout  
Dorinda Miles Smith  
Robert & Gail Martin  
Tom & Dot Corson  
Bill & Lori Firstenberger  
John & Judy Kistner  
Don Krabill  
Philip & Jan Lux  
Pokagon Band of Potawatomi  
Dick & Kayte Stout  
Tom & Dot Arnold  
John & Gwen Gildea  
Tom & Dana Pletcher

Stuart & Paula Barb  
Laurel Spencer Forsythe  
Douglas & Karen Mick  
Welch Packaging Group, Inc.  
Marie Smith  
Darlene Adkins  
Carolyn Bonanno  
James & Sidney Rieckhoff  
Douglas Webster & Sharon Beardsley  
William & Nancy Slimak  
The Questers, Frances C. Couquillard #78  
Peter M. Carney  
Barbara Boss  
Linne & Rachel Dose  
Teryl Lyn Yoder  
Marilyn & Bob Ronk  
Beth Nellist  
Meege Williams  
Bob Edel  
Carol Emens  
Steve & Joan Malm  
Ken & Charlotte Stuff  
Elkhart Dahlia Club  
Bob & Karin Frey  
Neil & Pat Klockow  
Eric & Janet Leedy  
Jim & Judy Stringfellow  
Don & Lynn Beech

Phyllis Warrick  
Larry & Suzanne Cadieux  
Darlene Eddy  
Chuck & Phyllis Gordon  
Norman & Alice Hessert  
Richard Kemper  
Margaret Saul  
Marilou & Milton Sherrard  
Robert & Sally Wegnerowski  
William & Jan Atwood

### MUSEUM OBJECT DONORS

George Minnix  
Tom & Sara Elkin  
Oscar Schricker  
Bill Beardsley  
Elkhart County Historical Museum  
Family of John & Marguerite Calvert  
Jack & Karen Cittadine  
Jeffrey & Lehman F. Beardsley  
George & Patsy Bucklin  
Scott Collins  
Linda Clark  
Deputy Family  
Kim Huber  
Susanne Ray Beardsley  
Hosea & Jeanette Jump  
James E. Calvert



## HAVILAH BEARDSLEY HOUSE - THE NEXT 100 YEARS

### THE HAVILAH BEARDSLEY HOUSE ENDOWMENT FUND THROUGH THE ELKHART COUNTY COMMUNITY FOUNDATION

By GAIL MARTIN, DEVELOPMENT OFFICER

This endowment building campaign is structured to begin in 2015 and end in 2018. The goal is to raise \$100,000 each of the next four years, thereby maximizing the ECCF 25% annual match, in order to raise the maximum of \$500,000 to support future operations.

The purpose of this endowment campaign is to leverage community financial support for the future sustainability of the Havilah Beardsley House. The ECCF Endowment Challenge greatly reduces the need for asking the community for future dollars for operations. The future sustainability of the HBH will make the Beardsley Historic District a more livable place, and it is the symbol of Elkhart's entrepreneurial spirit and community roots. A self-sustaining HBH provides a long-term living example of a vibrant community that is fiscally responsible.

The Havilah Beardsley House is the heart of the Community. It is more than just an architectural icon of Elkhart's entrepreneurial past; it is also an historic landscape serving as a present-day learning experience providing public educational opportunities in historic preservation, fine arts appreciation, urban archaeology and cultural performance.

The HBH was built in 1848, the first brick structure in Elkhart by Havilah Beardsley, the founder of Elkhart. The west wing was added in the 1850's, and in the 1890's the east wing was added to complete the house as we see it today. As an inspiration to our visitors and funders, we can start with the advantages that Havilah Beardsley saw for the city, highlight his successful relationship with Native Americans, recite the history of his business endeavors and acknowledge his many successes.

Restoration of the Havilah Beardsley House began after the house was purchased from Darlene Adkins in 2006. The raising of funds for the entire restoration began in earnest in 2010 with a campaign to raise \$500,000. The funds were raised by 2014, and the work to complete the restoration began in 2015.



Restoration of the HBH is the keystone to the development of a cultural corridor that links the HBH and the Wellfield Botanic Gardens to the downtown cultural district which includes the Learner Theatre, IUSB Elkhart Centre and the River Walk.

The HBH should be a welcoming place, comfortable and interesting, not threatening or boring. The HBH should tell the success not only of Havilah Beardsley but of many Elkhart generations who have contributed to this innovative city.

Having a sense of where we came from gives us clearer direction where we are going. As a community founded upon strong leadership and an enduring entrepreneurial spirit, it is important that we educate every generation about our story in order to continue on a path of meaningful and inspirational innovation. We can't just do what was done in the past. We need to create our future. The Beardsley family is but one part of the story. The histories of many families over many generations combine to weave the ever-growing tapestry of Elkhart and its future promise.

**MINDY YODER FROM  
L.P. CUSTOM PAINTING  
PREPARING DOOR IN WEST WING**

THE  
*Havilah Beardsley*  
HOUSE



## HAVILAH BEARDSLEY HOUSE GRAND OPENING EVENTS

By WILLIAM A. FIRSTENBERGER, EXECUTIVE DIRECTOR

A full slate of activities is planned for the Grand Opening of the Havilah Beardsley House. Sunday, May 3, from 1-4pm the Havilah Beardsley House will offer free public open house tours and a lineup of interesting speakers and attractions. Havilah Beardsley House campaign chair Gail Martin will serve as emcee for the dedication program. John Warren, Chairman for the Pokagon Band of Potawatomi, will open the events speaking on the Native American perspective of regional history and the role of the Pokagon Band in our community today.

Ruthmere Board Member and community leader Robert Deputy will welcome those in attendance and offer his perspective on the role of historic preservation in a community. Elkhart's mayor, the Honorable Mayor Dick Moore, will reflect upon Elkhart's history offering a strong foundation for building its future. Diana Lawson, Executive Director for the Elkhart County Convention and Visitors Bureau, will comment on the role historic sites play in the community identity. Bill Beardsley, the great-great-grandson of Elkhart's founding family Dr. Havilah and Rachel Beardsley, will share his family's connection to Elkhart. Ruthmere Executive Director Bill Firstenberger will comment on the goals and purpose of the Havilah Beardsley House, a truly different kind of house museum. These speakers, joined by the Ruthmere Foundation Board of Directors and the Chamber of Commerce, will have a ribbon cutting to officially open the Havilah Beardsley House.

Period musicians Mark and Liza Woolever will be on hand all afternoon setting the mood with authentic nineteenth century music. World renowned performance artist Robert Shangle, also known as LiveStatue, will portray Dr. Havilah Beardsley and be available for picture poses with attendees. TAPSNAP Phototainment will be providing customized souvenir photographs at the event preserving memories of the day for all.



**PAUL YODER FROM L.P. CUSTOM PAINTING  
REMOVING WALLPAPER IN FAMILY PARLOR**



**SCHROCK PLASTERING IN THE WEST WING**



**CONSTRUCTION OF WALL AND SUBFLOOR  
IN 1848 KITCHEN AND LARDER**

## LOUIS COMFORT TIFFANY LEADERSHIP CIRCLE MEMBERS

**\$10,000 DIAMOND**

Joan Beardsley Norris



**\$5,000 PLATINUM**

Arthur J. Decio

Robert & Mary Pat Deputy

Dorinda Miles Smith

**RUTHMERE LCT TRIP  
TO DRIEHAUS MUSEUM**

RUTHMERE LCT members will be taking on Chicago's Gilded Age on May 7, 2014. Our trip will begin with a visit to the Driehaus Museum, where Executive Director Liz Dube`-Scherr will meet us before we explore the nineteenth century home. Then we will take a short two block walk to Quartino for lunch. There will also be a special surprise activity in Chicago before returning home. Be sure to secure your reservation early.

**\$2,500 ROSE GOLD PATRON**

Richard & Linda Armstrong

Robert B. Beardsley

Jim & Patty Brotherson

Jack & Karen Cittadine

Peter & Lisa Deputy

George & Kathy Freese

Connie Fulmer

Raymond & Teri Stout

**\$1,000 GOLD PATRON**

Darlene Adkins

Thomas & Dorothy Arnold

Thomas & Dorothy Corson

Burt & Alene Culver

Richard Deputy

Thomas & Margaret Deputy

Lois Dusthimer

John & Gwen Gildea

John & Judy Goebel

Doug & Barbara Grant

Thomas & Dana Pletcher

Amish & Amy Shah

Peggy Weed

Scott & Kim Welch

Jeff & Phid Wells

The Welter Foundation

In the late fall of 2014 we held our Third Annual Fund Drive to support our programs and exhibits. The Annual Fund represents an opportunity for the public (both Ruthmere members and non-members) to make a separate year-end tax deductible gift. Our total was \$9,820! Thank you so much to the Annual Fund participants who are listed below.

### 2014 ANNUAL FUND DONORS

Peggy Weed  
Dorinda Miles Smith  
Corson Family Foundation, Inc.  
Richard Deputy  
Robert & Mary Pat Deputy  
George & Kathy Freese  
Joan Beardsley Norris  
Edward & Mary Jo Beardsley  
Bob & Karin Frey  
Charles & Annick Loving  
Tom Myers

David T. & Susan Lehman  
Hon. Richard Moore  
Lise Dube`-Scherr  
Janice Atwood  
Cameron Combs  
Kent & Lucy Emery  
Bill & Lori Firstenberger  
Barbara Naranche  
Smith's 18th Street Picture Framing  
Mary Lou Stackhouse  
Terry Trimmer

Donald & Ruth Rockwell  
Dan & Lisa Tychonievich  
Jenny DeDario  
Fran Firstenberger  
Barbara Obenchain  
Jan Pellus  
Schrock Plaster Company  
Marie Smith  
Ronald & Jacqueline Wonso

## \$500 SILVER PATRON

Dean & Peggy Birzele  
 William Bissell  
 Barbara Borneman  
 Faiz & Holly Khoja  
 Philip & Jeannette Lux  
 Bill & Elaine Marohn  
 James & Sidney Rieckhoff  
 David & Nancy Smith  
 David Weed  
 L.P. Custom Printing

## \$250 BRONZE PATRON

Stuart & Paula Barb  
 Jim & Lois Bare  
 Edward & Mary Jo Beardsley  
 Carolyn Bonanno  
 Cameron T. Combs  
 Peter Combs  
 Cynthia Dunlop  
 Kent & Lucy Emery  
 Charles Gordon  
 John & Sharon Feddersen  
 Donald & Judy Findlay  
 Bill & Lori Firstenberger  
 Don & Dianne Frandsen  
 Bob & Karin Frey  
 Laura Funk  
 Dean & Judy Kelly  
 Fred & Carolyn Lamble  
 Charles & Annick Loving  
 Claire Luther  
 Robert & Gail Martin  
 Lynne Miles  
 Jim & Karla Morton  
 Thad & Rachelle Naquin  
 Jeremy & Christin Pinckert  
 The Marilou Richie Family  
 Kirk & Sue Root  
 Jon & Carol Smoker  
 Mary Lou Stackhouse

## RUTHMERE MEMBERSHIP

### \$100 PATRON

Nafe & Jeannine Alick  
 Marilyn Anson  
 Harold & Jane Atkins  
 Lynette Bachman  
 Stephen & Jean Barton  
 Rufus & Marilyn Beardsley  
 John & Marty Bender  
 Steve & Ruth Ann Berger  
 Barbara Boss  
 Lona Bradford  
 Matthew & Tracy Brennan  
 James & Sheila Bridenstine  
 B. E. Brill Electric  
 Richard Brotherson  
 Peter & Gloria Carney  
 Geoffrey & Kathleen Church  
 Tana & Chris Clementz  
 Mr. & Mrs. William Cloar  
 Doloris Cogan  
 Richard & Kathie Collins  
 Bruce & Deidre Combs  
 Lawrence & Mary These Daher  
 Linne & Rachel Dose  
 Lise Dube'-Scherr  
 Lori Eber  
 Carol Emens  
 Fran Firstenberger  
 Dawn Fisher  
 Robert & Joanne Franklin  
 Gary & Nancy Garrett  
 Elaine Griffen  
 Daniel & Lydia Halstead  
 Dorothy Hansen  
 Mary Jane Hiles  
 Terry & Lu Hoogenboom  
 Laura & Randy Horst  
 Jep & Joyce Hostetler  
 Frank & Jacqueline Hughes  
 Jim Kelly  
 Charlie & Celia Kirk  
 Mr. & Mrs. Neil Klockow  
 Annette Kozak  
 Christine Kralovansky  
 Chuck & Betty Lamb  
 James Landaker  
 Vic & Diana Lawson  
 David T. & Susan Lehman  
 Janice Lohman  
 Steve & Maralee Macumber

**THANK YOU FOR YOUR CONTINUED SUPPORT  
 OF THE RUTHMERE FOUNDATION. PLEASE  
 CONTACT US IF AN UPDATE IS REQUIRED.**

Arlene Mark  
 Alex & Barbara McArthur  
 Kevin Miller  
 Margaret Miller  
 Ned & Flo Monger  
 The Honorable & Mrs. Dick Moore  
 Patricia Morison  
 Clifford & Jean Murray  
 Tom Myers  
 Mary Naquin  
 Georgene Nelson  
 Mike & Tina Nicolini  
 Barbara Obenchain  
 Jan Pellus  
 Robert Petersen  
 Clyde & Carla Riley  
 Bob & Marilyn Ronk  
 Nicholas Roth  
 Rev. Willard & Alice Roth  
 Stan & Linda Rupnow  
 Leonard & Pam Sailor  
 Floyd & Eileen Saner  
 Mary Ellen Shamory  
 Jim & LaRayne Siegmann  
 Marie Smith  
 Patricia Smith  
 Lori Snyder  
 Doris Stevens  
 Jim & Judy Stringfellow  
 Ken & Charlotte Stuff  
 Meghann Sullivan  
 Terry Trimmer  
 Joan Troyer  
 Dr. & Mrs. Jack A. Turnock  
 Linda Unger  
 Sklyer Walker  
 Steve Watterson  
 Marty Weber  
 Brian & Brenda Wiebe  
 Ronald & Jacqueline Wonso  
 Arthur & Suzanne Wyatt

### CORPORATE PATRON MEMBER

INOVA Federal Credit Union  
 Key Bank  
 1st Source Bank  
 Menno Travel Service  
 Shreiner & Sons, Inc.  
 Bradley Vite Fine Arts  
 Elkhart County Board  
 of Realtors

## RUTHMERE CORPORATE SPONSORS

*Join us in thanking our Program Sponsors & Business Partners*

Key Bank - Coffee on the Piazza  
 1st Source Bank - Patriotic Series  
 INOVA Federal Credit Union - School Field Trip Assistance  
 Bill Deputy Foundation - School Field Trip Assistance  
 Elkhart Noon Kiwanis - School Field Trip Assistance  
 Pumpernickel's Catering - EOQ Cocktails  
 Shreiner & Sons, Inc. - Promotional Fans  
 Bradley Vite Fine Arts - Gallery Talks  
 The Elkhart Truth - Havilah Beardsley House Traveling Exhibit  
 Whole Foods - Adopt A Pom Sponsor

## LOCAL PARTNERS

|  |  |
|--|--|
| IUSB Ernestine M. Raclin School of the Arts      | Big Brothers Big Sisters of Elkhart County |
| IUSB Anthropology Department                     | First Presbyterian Church of Elkhart       |
| Indiana Landmarks                                | Fox 28                                     |
| University of Notre Dame Anthropology Department | WVPE                                       |
| Downtown Elkhart, Inc.                           | WNIT                                       |
| Elkhart County Community Foundation              | The Elkhart Truth                          |
| Elkhart County Convention and Visitors Bureau    | Matterhorn Conference Center               |
| Greater Elkhart Chamber of Commerce              | Kil Architecture & Planning                |
| Elkhart County Museum Association                | American Home Improvements                 |
| Christiana Creek Coalition                       | L.P. Custom Painting                       |
| Elkhart City Parks Department                    | Johnson Masonry, Inc.                      |
| City of Elkhart                                  | Domain Logic Technology Solutions          |
| Elkhart County Historical Museum                 | Chupp's Piano Service                      |
| Elkhart Public Library                           | Radecki Galleries, Inc.                    |
| The Lerner Theatre                               | H&M Tree Service                           |
| Wellfield Botanic Gardens                        | Himco Waste-Away                           |
| Welch Packaging, Inc.                            | The Daily Grind                            |
| Habitat for Humanity of Elkhart County, Inc.     | Menno Travel Service                       |
| St. Paul's United Methodist Church               | Young Professionals of Elkhart             |
|  | Lampkin Magic Productions                  |



## GREENHOUSE RESTORATION NEARS COMPLETION

By WILLIAM A. FIRSTENBERGER, EXECUTIVE DIRECTOR

As if restoring the Havilah Beardsley House were not enough in the way of special projects, the restoration of Ruthmere's iconic greenhouse also comes to a culmination this spring. Having been a topic of discussion for some time (See Robert Recalls article in 2011 Spring/Summer issue of the Ruthmere Record), this restoration has had nearly as many twists and turns as a vine of ivy. Every step along the way sprouts of support have burst forth growing this challenging task into a glorious bloom.

From top to bottom, the greenhouse was in serious need of help. In late 2012 the Elkhart County Community Foundation awarded a \$10,000 seed grant to support the restoration of this historic structure. When added to an additional \$25,000 of private funding, work was ready to start. After an exhaustive search of specialty contractors several have stepped forward to deliver their very best. D&M Glass Corporation restored the complicated dome, and Johnson Masonry repaired cracks in bricks, mortar, concrete floors and reconfigured the potting shelves to provide greater visitor access. Schoberg Restorations rebuilt two window frames that had fallen into serious disrepair, Brill Electric updated power, American Home Improvement installed new handrails and LP Custom Painting prepared all painted surfaces and applied two fresh coats of "Ruthmere Cream."

The greenhouse will officially open in July with a special Butterfly Exhibit, and starting this fall Ruthmere will begin presenting an on-going Garden Series to give green thumbs something new to look forward to all year round. For September, think dahlias!



GREENHOUSE RESTORED DOME SHOWN ABOVE



## RUTHMERE FIELD TRIPS

By JENNIFER JOHNS, CURATOR

Ruthmere has received field trip support to offer 3rd - 5th graders at public, private and home schools throughout Elkhart County a tour of Ruthmere and Havilah Beardsley House. INOVA Federal Credit Union, Bill Deputy Foundation and Elkhart Noon Kiwanis Club have funded over 2,100 student field trips. Each school will receive one dollar per student as a transportation stipend to assist with travel costs. We are actively seeking additional businesses and clubs who want to show their support for the educational value of field trips. Getting kids interested in their local history is important. This program is a great way to teach students about the community's roots.

## "MY FIRST MUSEUM VISIT"

By CAROLYN BONANNO, COMMUNICATIONS COORDINATOR

In October 2014, Ruthmere began a new tour called "My First Museum Visit" for Preschool - 2nd grade students. We hosted our first two field trips in 2014 and more are scheduled beginning April 2015. Our goal is to introduce younger children to the knowledge and fun museums have to offer. Children learn the history of the Beardsley family by using a puppet show to bring the stories of Dr. Havilah Beardsley, Chief Pierre Moran, and Albert and Elizabeth Beardsley to life before their very eyes. Importance is placed on concepts such as, what is history?, what is art? and the significance of the Beardsley family in Elkhart. For information on how to book a "My First Museum Visit" tour call Communications Coordinator, Carolyn Bonanno at 574-264-0330 ext. 101.

## "MY FIRST MUSEUM VISIT" PUPPET SHOW BACKDROP



## i-SPY TOUR - HISTORY IN YOUR HANDS!

By KATE ROGERS, ASSOCIATE CURATOR

Have you ever wanted to know more about the city of Elkhart, its monuments, museums or sites? Did you wish there was an easy and fun way to access such information? Well there is! i-Spy Elkhart is a fun and free self-guided cell phone tour. Simply dial 574-584-7007, download the app for iPhone or Android, or access the mobile web version and away you go! And new this summer, i-Spy Elkhart tour stops will be available in both Spanish and French, in addition to those already available in English. Visit Ruthmere's website ([www.ruthmere.org](http://www.ruthmere.org)) and our Public Programs page for links to learn more.



Interested in creating a tour or tour stops for your Museum, Historic Site, and/or Garden in Elkhart County? Or are you a local business owner interested in an advertising spot or sponsoring one of our tours or tour stops? Contact Associate Curator Kate Rogers at 574-264-0330, ext. 116 for more information.





## CREEK HOUSE CENTER A PLACE FOR SPECIAL FAMILY TIMES

By CARLA RILEY, CAMPUS COORDINATOR



Creek House Center offers accommodations for families wanting to stay together during special times. Ruthmere is placing Creek House Center brochures throughout the community to share information about this unique setting available to families. For more information contact Carla Riley at [criley@Ruthmere.org](mailto:criley@Ruthmere.org) 574-264-0330 ext. 113.

## RUTHMERE - A VINTAGE FAIRYTALE WEDDING

By JOY OLSEN, WEDDING COORDINATOR

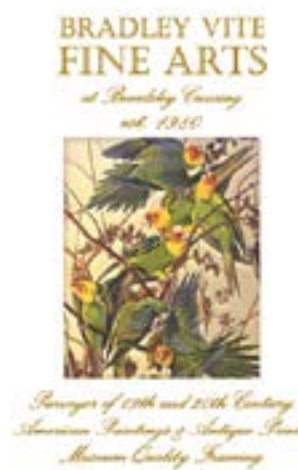


Ruthmere makes an ideal setting for elegant garden weddings from late spring through early fall. For that truly unique ceremony, Ruthmere can accommodate your needs and help assure that your wedding is beautiful and joyous. All wedding packages include the services of our Wedding Coordinator, Joy Olsen who will work with you to ensure that your day is truly memorable. Reservations 574-264-0330 ext. 103.

## GALLERY TALKS

Ruthmere presents Gallery Talks the first Wednesday of each month at 12:30pm. The museum hosts a twenty-minute discussion on an object or artwork within the collection. Talks are free public events, thanks to the generous sponsorship of Bradley Vite Fine Arts Gallery, and participants receive a discount to take our Highlights Tour.

Bradley Vite Fine Arts is located just west of the Ruthmere Museum at 1600 West Beardsley, and displays nineteenth and twentieth century works of art. It also offers custom-framing as well as conservation services.



## RUTHMERE & HAVILAH BEARDSLEY HOUSE GUIDED TOURS



Guided tours of Ruthmere, the lavishly decorated 1910 historic home of Albert and Elizabeth Beardsley, are offered Tuesday through Saturday on the hour from 10am to 3pm and Sunday from 1pm to 3pm. Admission is \$10 for adults, \$4 for students and children under 5 are free with an adult.

Havilah Beardsley House, home of Elkhart's founder, opens to the public May 3, 2015. Tours are available Tuesday through Saturday on the hour from 10am to 3pm and Sunday from 1pm to 3pm. Regular admission is \$5 for adults, \$2 for students and children under 5 are free with an adult.

Wednesday is Senior Discount Day, seniors 65 and older receive admission to Ruthmere for \$7 and Havilah Beardsley House for \$3.

Members are admitted free at both locations (see [www.Ruthmere.org](http://www.Ruthmere.org) for more information on Ruthmere member benefits). Bring your family and friends for an experience in history, art and architecture by way of a guided tour, a program or a special event.

For more information call:  
574-264-0330  
or visit [www.Ruthmere.org](http://www.Ruthmere.org)

## 2015 SPRING & SUMMER CALENDAR OF EVENTS

### APRIL

- April 1 Ruthmere Reopens for the 2015 Season
- April 1 \*Gallery Talk 12:30pm - Sponsored by Bradley Vite Fine Arts
- April 5 \*Buster Sunday - Ruthmere Closed
- April 9 \*Response to Ruthmere® - Contemporary Art Exhibition Open House for Interested Artists - 6pm - 7pm
- April 12 \*Free Family Sunday 1-4pm - Ruthmere Only
- April 16 \*A-to-Z R&R Series - IUSB Radin School of the Arts and Ruthmere World Voice Day Student Recital 7pm

### MAY

- May 3 \*Free Family Sunday 1-4pm - Havilah Beardsley House Only
- May 3 Havilah Beardsley House Grand Opening Day featuring LiveStage (see article page 8)
- May 5 \*A-to-Z Discover Historic Elkhart Series featuring Major Dick Moore, History of the St. Joseph and Elkhart Avenues @ 6:30pm Havilah Beardsley House
- May 6 \*Gallery Talk 12:30pm - Sponsored by Bradley Vite Fine Arts
- May 9 \*Plugged IN! 2015 Ruthmere Electric Auto Show
- May 10 Mother's Day (Free Admission for Mothers)
- May 24 \*Blue Star Museums through September 6, 2015 - Active duty service families free, sponsored by 1st Source Bank
- May 24 Memorial Day observed - Receive a free flag with each tour
- May 25 Memorial Day - Ruthmere & Havilah Beardsley House closed

### JUNE

- June 3 \*Gallery Talk 12:30pm - Sponsored by Bradley Vite Fine Arts
- June 6 \*Coffee on the Piazza - 9:30am - 12pm
- June 7 \*Free Family Sunday 1-4pm
- June 13 \*Coffee on the Piazza - 9:30am - 12pm
- June 14 Flag Day - Receive a free flag with each tour sponsored by 1st Source Bank
- June 18-21 Elkhart Jazz Festival
- June 19-20 LiveStage by Ruthmere at the Elkhart Jazz Festival
- June 20 \*Coffee on the Piazza - Jazz Festival 9:30am - 12pm
- June 21 Father's Day (Free Admission for Fathers)
- June 25 \*A-to-Z R&R Cocktails - French Cognac 5-7pm Creek House Center
- June 27 \*Coffee on the Piazza - 9:30am - 12pm

### JULY

- July 1 \*Gallery Talk 12:30pm - Sponsored by Bradley Vite Fine Arts
- July 3 Independence Day observed - Receive a free flag with each tour sponsored by 1st Source Bank
- July 4 Independence Day - Ruthmere & Havilah Beardsley House closed
- July 5 \*Free Family Sunday 1-4pm
- July 7 \*A-to-Z Discover Historic Elkhart Series featuring Mark Scholtz - French 'Voyageur' Uniforms and Waters of Elkhart County @ 6:30pm Havilah Beardsley House
- July 11 \*Coffee on the Piazza - 9:30am - 12pm
- July 11 Bastille Day - Member Only Event - 4pm - 6pm
- July 11 \*Don Tepler Concert - 7pm
- July 18 \*Coffee on the Piazza - 9:30am - 12pm
- July 18 \*Garden Fete and Soiree Soiree - 1pm - 3pm
- July 25 \*Coffee on the Piazza - 9:30am - 12pm
- July 26 Ruthmere LiveStage at 4-H Fair

### AUGUST

- Aug 1 \*Coffee on the Piazza - 9:30am - 12pm
- Aug 2 \*Free Family Sunday 1-4pm
- Aug 5 \*Gallery Talk 12:30pm - Sponsored by Bradley Vite Fine Arts
- Aug 8 \*Coffee on the Piazza - 9:30am - 12pm
- Aug 15 Adopt A Pom Party - TBA
- Aug 15 \*Coffee on the Piazza - 9:30am - 12pm
- Aug 21 \*Coffee on the Piazza - 9:30am - 12pm
- Aug 29 \*Coffee on the Piazza - "Backpackcom" - 9:30am - 2pm

\* Free Event

+ Member Discount Benefits

^ Bronze Patron Benefits

- Silver Patron Benefits

> Louis Comfort Tiffany Benefits

< Corporate Member Benefits

### OFF THE RECORD

DO YOU RECEIVE OUR ELECTRONIC SNAPSHOT OF MONTHLY EVENTS THAT INCLUDES PHOTOS, SHORT STORIES, LINKS AND SPECIAL OFFERS? OFF THE RECORD IS A GREAT WAY TO STAY INFORMED ABOUT RUTHMERE MUSEUMS CAMPUS HAPPENINGS - AS THEY HAPPEN! IF YOU WOULD LIKE TO SUBSCRIBE, PLEASE SEND A REQUEST TO [KROGERS@RUTHMERE.ORG](mailto:KROGERS@RUTHMERE.ORG).



## Inside This Issue

1. Havilah Beardsley Opens To The Community
2. Vive la France/Membership - Win A Trip
3. Hubble House
4. Hubble House (cont'd)/Coffee on the Piazza
5. Plugged IN! Electric Auto Show/2015 EOQ
6. Fall Concerts/Volunteer Services
7. Butterfly Garden/LiveStatue Returns
8. Dan Tepfer Concert
9. Contemporary Art Exhibition/Quilt Garden
10. Havilah Beardsley House Donors
11. Havilah Beardsley House - The Next 100 Years
12. Havilah Beardsley House Grand Opening
13. Louis Comfort Tiffany Circle/Annual Fund
14. Ruthmere Membership
15. Ruthmere Corporate Sponsors/Business Partners
16. Greenhouse Restoration/Ruthmere Field Trips
17. My First Museum Visit/i-Spy
18. Creek House Center/Weddings/Gallery Talks
19. Calendar of Events
20. Inside This Issue/Adopt A Pom

*Ruthmere*

An Experience in History, Art & Architecture

THE RUTHMERE FOUNDATION, INC.  
302 EAST BEARDSLEY AVENUE  
ELKHART, INDIANA 46514  
574.264.0330  
WWW.RUTHMERE.ORG

Non-Profit Organization  
U.S. POSTAGE  
**PAID**  
Elkhart, IN  
Permit No. 145

*RUTHMERE IS SUPPORTED BY ITS MEMBERSHIP, PRIVATE DONATIONS, PLANNED GIFTS AND LEGACIES.*

## ADOPT A POM FOR RUTHMERE

*By WILLIAM A. FIRSTENBERGER, EXECUTIVE DIRECTOR*



Ruthmere Museum is a stunningly beautiful place, but it has a nagging problem - this architectural gem requires ongoing preservation. Cracks in limestone, bricks and mortar require repair, wooden window frames and doors need regular painting to fight the aging effects of sun, rain, snow and ice. Once every generation, all of Ruthmere's structures require a new roof and mechanical system updates. Ruthmere belongs to everyone, and now through a matching endowment fund in Ruthmere's name at the Elkhart County Community Foundation (ECCF), you can help keep Ruthmere looking its best while at the same time going a little Pom-Crazy.

Here's How You Can Help: Ruthmere's Adopt a Pom program is a fun way to sustain Ruthmere's preservation needs. Ruthmere has 289 little orphan pomegranates, or "Poms," that once every year need a good, stable Pom Parent. As architectural decorations that adorn Ruthmere's walls inside and out, these industrious little Poms work hard for their supper as unmistakable symbols of this historic property listed on the National Register of Historic Places. You can become a Pom Parent by making a tax deductible contribution into the Ruthmere Museum Fund managed by the ECCF. Best of all, the ECCF will match 25% of contributions made into this fund (up to an annual maximum of \$25,000). Checks can be made out to either the ECCF or Ruthmere Museum (please put ADOPT A POM in the memo line of your check). Adoption prices range from \$30 to \$600. Ruthmere staff will be happy to assist you in finding that perfect match for your level of support.



On August 13, 2015, we will host our inaugural Adopt a Pom Party serving pomtinis, pomegranate delights and all things made from this wonderful fruit. The Adopt a Pom Party is free to all individuals, businesses and organizations who have become a Ruthmere Pom Parent in 2015. Event support generously underwritten by **Whole Foods Market**, inviting everyone to enjoy Whole Foods, Whole People and a Whole Planet!